



HAMILTON
POW-R-SAFE
SYSTEMS LIMITED

Hamilton Pow-R-Safe Systems Ltd, Park Road,
Holmewood Industrial Park, Chesterfield S42 5UW
e-mail sales@hamiltonpow-r-safe.co.uk

EGOpro SAFETY: ACCESS CONTROL
Managing access control in restricted areas
Aid to Safety



EGOpro SAFETY: ACCESS CONTROL

Managing access control in restricted areas
Aid to safety

The EGOpro Safety Access Control System manufactured by Advanced Microwave Engineering uses the latest LNXessence technology which is a patented active RFID system to manage access by personnel or vehicles into a restricted area. Unlike other equipment on the market the EGOpro Safety Access Control System is totally hands free and its function is very simple and straight forward relying on a minimum of components. Basically a sensor or receiver and an identification tag (transmitter) communicate with each other to identify and authenticate the person or vehicle wanting to enter the restricted area.

How it works

Where automatic electric gates are in use the gate is fitted with a receiver and the member of staff or the vehicle carries the identification tag (or transmitter). When the two components communicate the receiver is activated or "wakes up" to process the signal from the transmitter. Once the receiver has verified the transmitter as being authorised for access it will activate the control system to open the gate. If the access is not authorised the receiver would reject the request and alert the control system accordingly that access has been denied, this could then be programmed to alert security if required. All relevant request and activation information is stored within the system which will include the identification of the person or vehicle making the request and the time and date of the request.



The EGOpro Safety Access Control System allows personal and individual identification information to decide who can enter the restricted area. It ensures maximum security for private and restricted areas but also allows free and uninterrupted access to the authorised staff or vehicles. The system monitors and tracks all events at the gate of both inbound and outbound traffic.



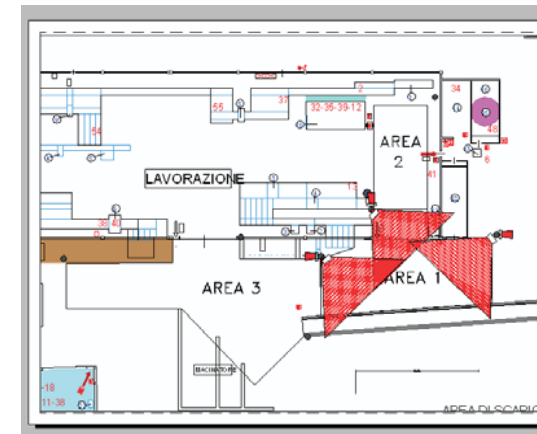
EGOpro SAFETY: ACCESS CONTROL

Managing access control in restricted areas
Aid to safety

EGOpro Safety Access Control System is basically made of five components.

1. Illuminator - a microwave activation unit
2. Receiver - the device that receives the data from the transmitter tag
3. Transmitter tag - double frequency (2.45GHz/433MHz)
4. Access control board - the control unit
5. Software - the information management system

In large fleet management applications where both a specific driver and vehicle need to be identified the EGOpro system is used in combination with an EGO BOOSTER this addition sends a single signal to the receiver identifying both driver and vehicle at one time.



With **EGOpro** in addition to access control features, once a vehicle or person has been allowed to enter the restricted area the system can further be programmed to give an alert by lights or siren when the transmitter tag moves into any designated danger zones (see red zones in diagram) providing maximum safety benefits on a busy and dangerous site.